



# Create...

## Liquid Silver + Silver Shimmer

Color	Silver (fill)	Silver (outline)
Base	Liquid Silver	50/50 MCVFF & Silver Shimmer
Pigment	n/a	3% by weight – Black PC
Mesh	156	83
Stencil	Direct	100 micron capillary
Flash	Yes	No



## Wilflex Inks

Product Bulletins: [www.wilflex.com/pib](http://www.wilflex.com/pib)  
email: [techserviceswilflex@polyone.com](mailto:techserviceswilflex@polyone.com)

### Product Ordering Codes

Liquid Silver: 10988LS  
Silver Shimmer: 15370MCVFF  
MCVFF: 18800MCVFF

[id:0001\_silver]



# Innovate...

Fashion Soft  
+ Brittle Base

Color	Blue (fill)	Blue (outline)
Base	Fashion Soft	Brittle Base
Pigment	3% by weight - Blue PC	3% by weight - Blue PC
Mesh	156	83
Stencil	Direct	100 micron capillary
Flash	Yes	No



## Wilflex Inks

Product Bulletins: [www.wilflex.com/pib](http://www.wilflex.com/pib)  
email: [techserviceswilflex@polyone.com](mailto:techserviceswilflex@polyone.com)

### Product Ordering Codes

Fashion Soft: 10340FSB

Brittle Base: 10460BB

[id:0002\_brittle]



# Innovate...

Plush Base  
+ Plush Base

Color	Grey (fill)	Grey (outline)
Base	Plush Base	Plush Base
Pigment	3% by weight - Black PC	8% by weight - Black PC
Mesh	156	83
Stencil	Direct	100 micron capillary
Flash	Yes	No



## Wilflex Inks

Product Bulletins: [www.wilflex.com/pib](http://www.wilflex.com/pib)  
email: [techserviceswilflex@polyone.com](mailto:techserviceswilflex@polyone.com)

**Product Ordering Codes**

Plush Base: 10700PB

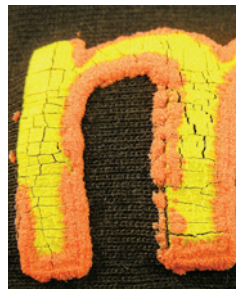
[id:0003\_plush]



# Imagine...

Brittle Base  
+ Plush+Ice Base

Color	Yellow (fill)	Orange (outline)
Base	Brittle Base	Plush+Ice 50/50
Pigment	3% by weight - Yellow PC	4% by wgt. - Orange PC
Mesh	156	83
Stencil	Direct	400 micron capillary
Flash	Yes	No



### Product Ordering Codes

Brittle Base: 10460BB

Plush Base: 10700PB

Ice Base: 10145IB

[id:0004\_brittle\_plush]

## Wilflex Inks

Product Bulletins: [www.wilflex.com/pib](http://www.wilflex.com/pib)  
email: [techserviceswilflex@polyone.com](mailto:techserviceswilflex@polyone.com)



# Explore...

Liquid Silver  
+ Bubble Stretch

Color	n/a (fill)	Silver (outline)
Base	n/a	Bubble Stretch+Liquid Silver 90/10
Pigment	n/a	n/a
Mesh	n/a	83
Stencil	n/a	100 micron capillary
Flash	n/a	No



## Wilflex Inks

Product Bulletins: [www.wilflex.com/pib](http://www.wilflex.com/pib)  
email: [techserviceswilflex@polyone.com](mailto:techserviceswilflex@polyone.com)

### Product Ordering Codes

Bubble Stretch: 10177BSB

Liquid Silver: 10988LS

[id:0005\_bubble\_silver]



# Explore...

Liquid Gold  
+ Liquid Gold+MCVFF

Color	Gold (fill)	Gold (outline)
Base	Liquid Gold	Liquid Gold+MCVFF 70/30
Pigment	n/a	n/a
Mesh	156	83
Stencil	Direct	100 micron capillary
Flash	Yes	No



## Wilflex Inks

Product Bulletins: [www.wilflex.com/pib](http://www.wilflex.com/pib)  
email: [techserviceswilflex@polyone.com](mailto:techserviceswilflex@polyone.com)

### Product Ordering Codes

Liquid Gold: 10989LG

MCVFF: 18800MCVFF

[id:0006\_liquid gold]



# Create...

## Fashion Gold + Sculpture

Color	Gold (fill)	Orange (outline)
Base	Fashion Gold	Sculpture
Pigment	6% Yellow+4% Orange	6% by weight Burn. Red PC
Mesh	86	83
Stencil	Direct	100 micron capillary
Flash	Yes	No



## Wilflex Inks

Product Bulletins: [www.wilflex.com/pib](http://www.wilflex.com/pib)  
email: [techserviceswilflex@polyone.com](mailto:techserviceswilflex@polyone.com)

### Product Ordering Codes

Fashion Gold: 10910FB

Sculpture: 10650SCP

[id:0007\_fashiongold\_sculpture]



# Explore...

Liquid Gold  
+ Plush Base

Color	n/a (fill)	Gold (outline)
Base	n/a	Liquid Gold+Plush 50/50
Pigment	n/a	n/a
Mesh	n/a	83
Stencil	n/a	100 micron capillary
Flash	n/a	No



## Wilflex Inks

Product Bulletins: [www.wilflex.com/pib](http://www.wilflex.com/pib)  
email: [techserviceswilflex@polyone.com](mailto:techserviceswilflex@polyone.com)

### Product Ordering Codes

Liquid Gold: 10989LG  
Plush: 10700PB

[id:0008\_liquid gold\_plush]





# Create...

## Silver Shimmer + Plush Base

Color	n/a (fill)	Grey (outline)
Base	n/a	Plush + Silver Shimmer 50/50
Pigment	n/a	3% by weight Black C
Mesh	n/a	83
Stencil	n/a	100 micron capillary
Flash	n/a	No



### Wilflex Inks

Product Bulletins: [www.wilflex.com/pib](http://www.wilflex.com/pib)  
email: [techserviceswilflex@polyone.com](mailto:techserviceswilflex@polyone.com)

### Product Ordering Codes

Silver Shimmer: 15370MCVFF  
Plush: 10700PB

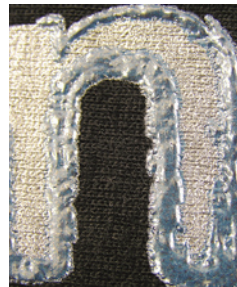
[id:0009\_plush\_shimmer]



# Invent...

Liquid Silver  
+ Liquid Silver+MCVFF

Color	Silver (fill)	Blue (outline)
Base	Liquid Silver	Liquid Silver+MCVFF 90/10
Pigment	n/a	8% by weight Blue C
Mesh	156	83
Stencil	Direct	100 micron capillary
Flash	Yes	No



## Product Ordering Codes

Liquid Silver: 10988LS

MCVFF: 18800MCVFF

[id:0010\_liquid silver]

## Wilflex Inks

Product Bulletins: [www.wilflex.com/pib](http://www.wilflex.com/pib)

email: [techserviceswilflex@polyone.com](mailto:techserviceswilflex@polyone.com)



Plush Base

Color	Red (fill)	n/a (outline)
Base	Plush Base	n/a
Pigment	3% by weight Red PC	n/a
Mesh	110	n/a
Stencil	Direct	n/a
Flash	No	n/a



**Product Ordering Codes**

Plush Base: 10700PB

## Wilflex Inks

Product Bulletins: [www.wilflex.com/pib](http://www.wilflex.com/pib)  
email: [techserviceswilflex@polyone.com](mailto:techserviceswilflex@polyone.com)

[id:0011\_plush base]



# Create...

## Fashion Soft

Color	Blue (fill)	n/a (outline)
Base	Fashion Soft	n/a
Pigment	744 C formula	n/a
Mesh	156	n/a
Stencil	Direct	n/a
Flash	No	n/a



**Product Ordering Codes**

Fashion Soft: 10340FB

## Wilflex Inks

Product Bulletins: [www.wilflex.com/pib](http://www.wilflex.com/pib)  
email: [techserviceswilflex@polyone.com](mailto:techserviceswilflex@polyone.com)

[id:0012\_fashion soft]



# Create...

## Liquid Silver

Color	n/a (fill)	Silver (outline)
Base	n/a	Liquid Silver
Pigment	n/a	n/a
Mesh	n/a	83
Stencil	n/a	100 micron
Flash	n/a	No



**Product Ordering Codes**

Liquid Silver: 10988LS

## Wilflex Inks

Product Bulletins: [www.wilflex.com/pib](http://www.wilflex.com/pib)  
email: [techserviceswilflex@polyone.com](mailto:techserviceswilflex@polyone.com)

[id:0013\_liquid silver]



# Explore...

## Bubble Stretch

Color	n/a (fill)	Green (outline)
Base	n/a	Bubble Stretch
Pigment	n/a	3% by weight green PC
Mesh	n/a	83
Stencil	n/a	100 micron
Flash	n/a	No



### Product Ordering Codes

Bubble Stretch: 10177BSB

## Wilflex Inks

Product Bulletins: [www.wilflex.com/pib](http://www.wilflex.com/pib)

email: [techserviceswilflex@polyone.com](mailto:techserviceswilflex@polyone.com)

[id:0014\_bubble stretch]



# Innovate...

## Ice Base

Color	n/a (fill)	Blue (outline)
Base	n/a	Ice Base
Pigment	n/a	4% by weight blue PC
Mesh	n/a	83
Stencil	n/a	100 micron
Flash	n/a	No



**Product Ordering Codes**

Ice Base: 101451B

## Wilflex Inks

Product Bulletins: [www.wilflex.com/pib](http://www.wilflex.com/pib)  
email: [techserviceswilflex@polyone.com](mailto:techserviceswilflex@polyone.com)

[id:0015\_ice base]



# Imagine...

## Natural Suede

Color	n/a (fill)	Tan (outline)
Base	n/a	Natural Suede
Pigment	n/a	4% by weight PC
Mesh	n/a	83
Stencil	n/a	100 micron
Flash	n/a	No



### Wilflex Inks

Product Bulletins: [www.wilflex.com/pib](http://www.wilflex.com/pib)  
email: [techserviceswilflex@polyone.com](mailto:techserviceswilflex@polyone.com)

### Product Ordering Codes

Natural Suede: 10425NS

[id:0016\_natural suede]





# Explore...

Frost Base

Color	n/a (fill)	Blue (outline)
Base	n/a	Frost Base
Pigment	n/a	4% by weight Blue PC
Mesh	n/a	83
Stencil	n/a	100 micron
Flash	n/a	Print/Flash/Print



## Product Ordering Codes

Frost Base: 10950FB

## Wilflex Inks

Product Bulletins: [www.wilflex.com/pib](http://www.wilflex.com/pib)  
email: [techserviceswilflex@polyone.com](mailto:techserviceswilflex@polyone.com)

[id:0017\_frost base]



# Innovate...

## Sculpture Base

Color	n/a (fill)	Red (outline)
Base	n/a	Sculpture Base
Pigment	n/a	4% by weight Maroon PC
Mesh	n/a	83
Stencil	n/a	100 micron
Flash	n/a	No



**Product Ordering Codes**

Sculpture Base: 10650SCP

## Wilflex Inks

Product Bulletins: [www.wilflex.com/pib](http://www.wilflex.com/pib)  
email: [techserviceswilflex@polyone.com](mailto:techserviceswilflex@polyone.com)

[id:0018\_sculpture base]



# Invent...

## Cork Base

Color	n/a (fill)	Beige (outline)
Base	n/a	Cork Base
Pigment	n/a	7501 C formula
Mesh	n/a	83
Stencil	n/a	100 micron
Flash	n/a	No



**Product Ordering Codes**

Cork Base: 18000CB

## Wilflex Inks

Product Bulletins: [www.wilflex.com/pib](http://www.wilflex.com/pib)  
email: [techserviceswilflex@polyone.com](mailto:techserviceswilflex@polyone.com)

[id:0019\_cork base]



# Create...

## Rock Base

Color	n/a (fill)	Red (outline)
Base	n/a	Rock Base
Pigment	n/a	3% Maroon PC + 1% Black PC
Mesh	n/a	83
Stencil	n/a	100 micron
Flash	n/a	No



**Product Ordering Codes**

Rock Base: 10670RB

## Wilflex Inks

Product Bulletins: [www.wilflex.com/pib](http://www.wilflex.com/pib)  
email: [techserviceswilflex@polyone.com](mailto:techserviceswilflex@polyone.com)

[id:0020\_rock base]



# Imagine...

HD Clear  
+ PVC Beads

Color	n/a (fill)	Purple (outline)
Base	n/a	HD Clear
Pigment	n/a	4% by weight Purple PC
Mesh	n/a	83
Stencil	n/a	100 micron
Flash	n/a	No



**Product Ordering Codes**

HD Clear: 10009HDC

## Wilflex Inks

Product Bulletins: [www.wilflex.com/pib](http://www.wilflex.com/pib)  
email: [techserviceswilflex@polyone.com](mailto:techserviceswilflex@polyone.com)

[id:0021\_clear beads]



# Imagine...

## HD Clear

Color	n/a (fill)	Purple (outline)
Base	n/a	HD Clear
Pigment	n/a	4% by weight Purple PC
Mesh	n/a	83
Stencil	n/a	100 micron
Flash	n/a	No



**Product Ordering Codes**

HD Clear: 10009HDC

## Wilflex Inks

Product Bulletins: [www.wilflex.com/pib](http://www.wilflex.com/pib)  
email: [techserviceswilflex@polyone.com](mailto:techserviceswilflex@polyone.com)

[id:0022\_HD clear]



# Create...

## Brittle White

Color	n/a (fill)	White(outline)
Base	n/a	Brittle White
Pigment	n/a	n/a
Mesh	n/a	110
Stencil	n/a	Direct
Flash	n/a	No



**Product Ordering Codes**

Brittle White: 11000BB

## Wilflex Inks

Product Bulletins: [www.wilflex.com/pib](http://www.wilflex.com/pib)  
email: [techserviceswilflex@polyone.com](mailto:techserviceswilflex@polyone.com)

[id:0023\_brittle white]



# Create...

Rock Base  
+ Plush Base

Color	n/a (fill)	Pink (outline)
Base	n/a	50/50 Rock + Plush
Pigment	n/a	3% by weight Maroon PC
Mesh	n/a	83
Stencil	n/a	100 micron
Flash	n/a	No



### Product Ordering Codes

Plush Base: 10700PB

Rock Base: 10670RB

[id:0024\_rock\_plush]

## Wilflex Inks

Product Bulletins: [www.wilflex.com/pib](http://www.wilflex.com/pib)  
email: [techserviceswilflex@polyone.com](mailto:techserviceswilflex@polyone.com)





# Create...

Ice + Plush  
+ Foil

Color	n/a (fill)	Purple (outline)
Base	n/a	50/50 Ice + Plush
Pigment	n/a	4% by weight Purple PC
Mesh	n/a	83
Stencil	n/a	100 micron
Flash	n/a	No



## Wilflex Inks

Product Bulletins: [www.wilflex.com/pib](http://www.wilflex.com/pib)  
email: [techserviceswilflex@polyone.com](mailto:techserviceswilflex@polyone.com)

### Product Ordering Codes

Plush Base: 10700PB

Ice Base: 10145IB

[id:0025\_ice\_plush]



# Create...

## Simulated Leather

Color	Light Brown (fill)	Dark Brown (outline)
Base	(see back)	Sculpture Base
Pigment	(see back)	3% by weight PC
Mesh	(see back)	83
Stencil	(see back)	100 micron
Flash	(see back)	No



### Wilflex Inks

Product Bulletins: [www.wilflex.com/pib](http://www.wilflex.com/pib)  
email: [techserviceswilflex@polyone.com](mailto:techserviceswilflex@polyone.com)

### Product Ordering Codes

Sculpture: 10650SCP  
(see back for details)

[id:0026\_leather]



# Create...

## Simulated Leather

Color	Light Brown	Black	Red
Base	50/50 Cork/Bubble	Ice Base	Fashion Soft
Pigment	7% Brown	.5% Black PC	1% Maroon PC
Mesh	110	110	110
Stencil	Direct	Direct	Direct
Flash	Yes	No	Yes

### Product Codes

Bubble: 10177BSB

Cork: 18000CB

Ice: 10145IB

Fashion Soft: 10340FB